



**Newburyport
Public Schools
School Committee Meeting**

February 6, 2023



**Francis T. Bresnahan
Elementary**



**Edward G. Molin Upper
Elementary
Rupert A. Nock Middle**



**Newburyport
High School**

Capital Improvements

Newburyport Public Schools

February 6, 2023

Capital Improvement

A Brief Overview

- ◆ The City's Capital Improvement Program (CIP) is **updated annually**
- ◆ The CIP **projects out five years**
- ◆ Capital projects involve the improvement or betterment of the **physical plant** and are **non-recurring**
- ◆ Every City department identifies projects for inclusion in the CIP
- ◆ The CIP is used as a **planning tool** for the City Council
- ◆ Capital **projects are approved annually** by the City Council

In addition to City funding, the District uses operational funds and grants to support capital projects.

Capital Improvement

NPS Five-Year Project Overview—Looking Backward

	FY19	FY20	FY21	FY22	FY23
City Funded	NHS Projector Upgrade Nock-Molin Parking Lot NHS Computers NHS Sidewalk and Walkway Nock-Molin Sidewalk NHS Boiler Brickwork	Nock-Molin Loading Dock NHs Pettingill Field Nock-Molin Sidewalks Nock-Molin Gym Floor District Tractor	No CIP due to COVID Crisis	None	None
District Funded	NHS Frontwalkway	NHS Cafeteria Remodel	NHS Gym Bleacher Seats NHS Parking Lot Retaining Wall NHS Theater Storage Shed NHS Classroom Renovation NHS Classroom Furniture	NHS Classroom Furniture NHS Kitchen Equipment	District Pick-up Truck Nock-Molin HVAC Controls NHS College-Career Center Space Study NHS Security Upgrade PH1
Multiple Sources (District, Utilities Incentives, and Green Communities Grant)		NHS Frequency Drives/Pump NHS Ventilation Controls NHS Energy Reduction PH2		NHS Energy Reduction PH2	NHS Energy Reduction PH3
Other Funding Sources (e.g., Morrill Foundation, Nutrition Assistance, Newburyport Education Foundation, Community Preservation Act)	Nock-Molin Oven NHS Outdoor Classrooms Nock-Molin Wellness Space NHS Fitness Center Nock-Molin STEM Labs NHS STEM Updates	District COVID Support NHS STEM Updates Merrimack Research Station NHS Wellness Space	Nock-Molin Food Processors Nock-Molin Video/Podcast NHS STEM Updates	NHS Gas Convection Ovens Nock-Molin Tennis Courts	NHS Integrated Arts Space Study

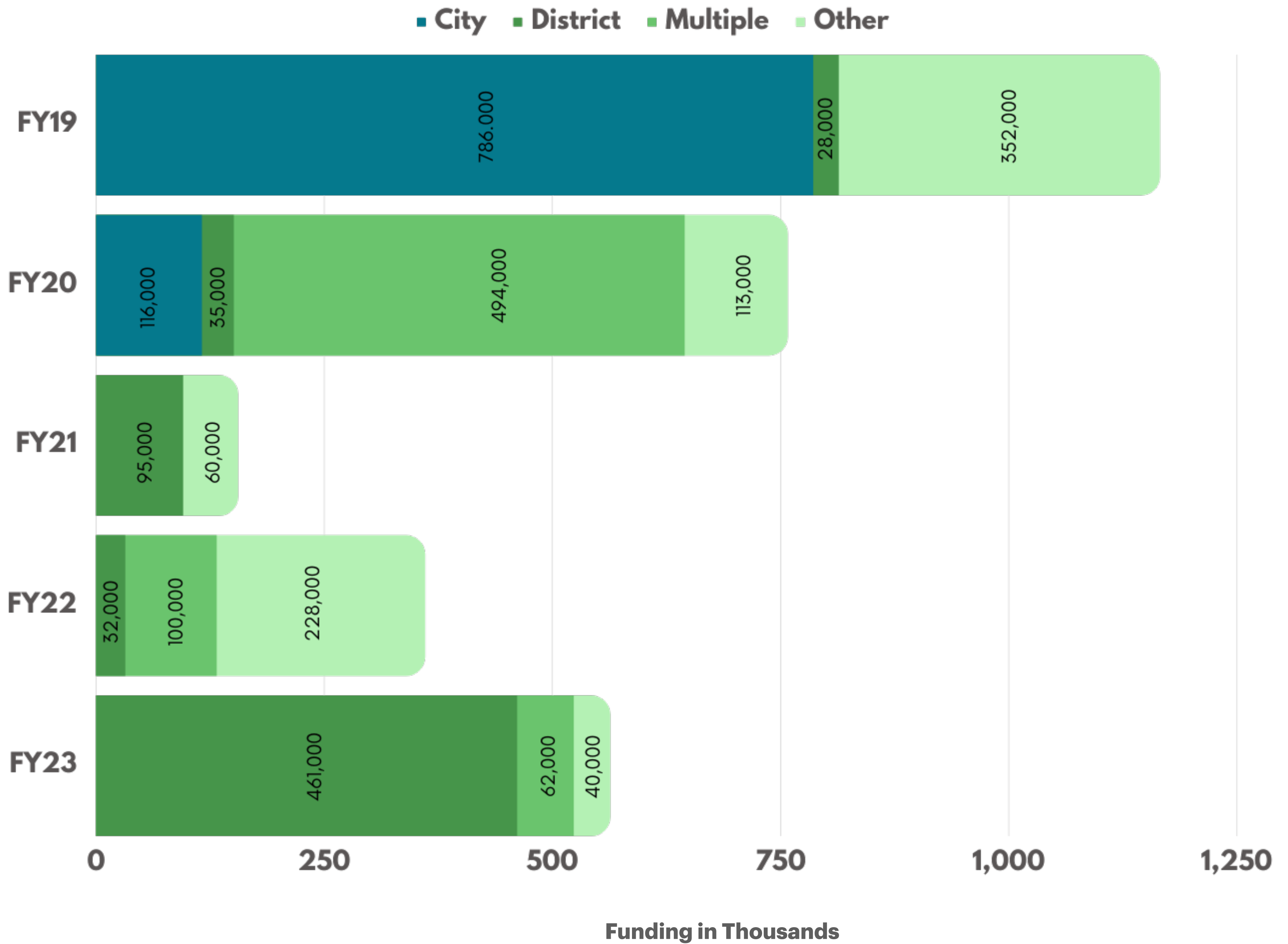
Capital Improvement

NPS Five-Year Project Overview—Looking Forward

	FY23	FY24	FY25	FY26	FY27
City Funded	NHS Elevator	NHS Engineering Plans NHS Library Carpet Replacement Nock-Molin Furniture Upgrades Nock-Molin Playground Repaving Nock-Molin Kitchen Equipment District Pick-up Truck	NHS Roof Project Nock-Molin Roof Project Nock-Molin Kitchen Equipment Nock-Molin Sidewalk Repaving	NHS Auditorium Plaster Repairs	
District Funded	District Pick-up Truck Nock-Molin HVAC Controls Nock-Molin Server Backup NHS College-Career Space Study NHS Security Upgrade PH1	NHS and Nock-Molin Building Automation System NHS Security System Upgrades PH2			
Multiple Sources <small>(District, Utilities Incentives, and Green Communities Grant)</small>	NHS Energy Reduction PH3	NHS Energy Reduction PH4			
Other Funding Sources <small>(e.g., Nutrition Assistance, Newburyport Education Foundation, Community Preservation Act)</small>	NHS Integrated Arts Space Study	NHS Integrated Arts Space NHS College-Career Center Space	NHS Integrated Arts Space NHS College-Career Center Space	NHS Integrated Arts Space NHS College-Career Center Space	

Capital Improvement Planning

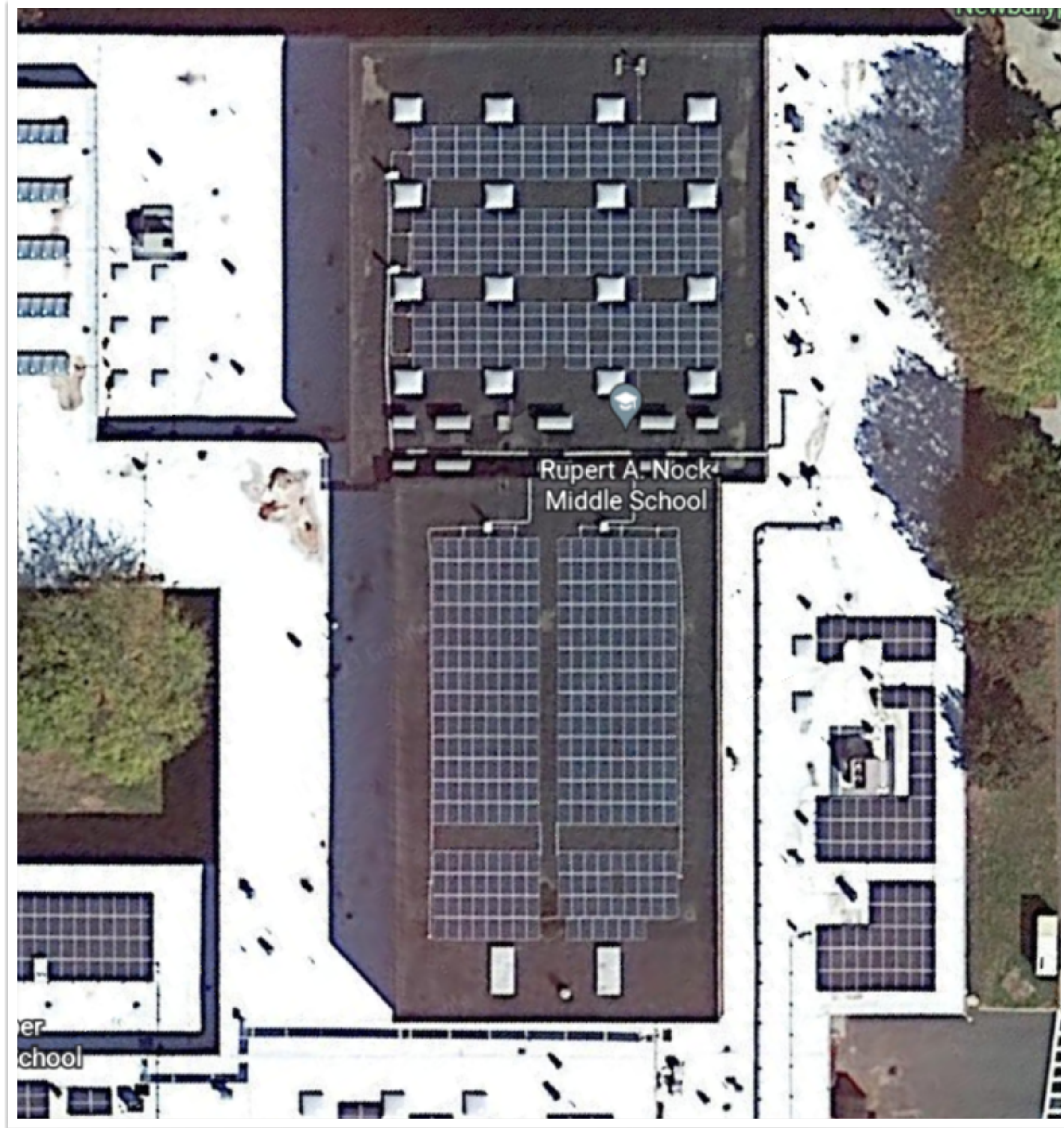
Investment Overview



Newburyport High School Roof

- ▶ MSBA has suspended their roof repair program due to the rise in construction costs-\$50/square foot
- ▶ White roof sections and asphalt shingle roof were last replaced in 1995
 - 31,530 square feet x \$50/sq. ft. = \$1,576,500
- ▶ Remaining roof sections were last replaced in 2001
 - 30,449 square feet x \$50/sq. ft. = \$1,522,450
- ▶ Construction projects over \$1.5 million require hiring an Owner's Project Manager (OPM) per MGL CH.149 section 44A1/2
- ▶ OPM fee (4% of construction costs) and Engineer fee (11% of construction costs)
 - Bldg A: \$236,475; Bldg B: 228,368





Nock-Molin Schools Gym and Auditorium Roof

- ▶ Last replaced in 1995
- ▶ 21,659 square feet
- ▶ Construction estimate (\$50/sq foot) = \$1,082,950
- ▶ Solar Panel Allowance = \$100,000
- ▶ Construction projects over \$1.5 million require hiring an Owner's Project Manager (OPM) per MGL CH.149 section 44A1/2
 - OPM and Engineering = \$177,443
- ▶ Estimated cost to replace = \$1,360,393

District Priorities

Project	Estimated Cost	Funding Options
NHS Elevator Controls	\$70,000	
NHS Roof	\$3,500,000	
Nock-Molin Roof (auditorium/gym)	\$1,360,00	
Pick Up Truck	\$68,000	
Phase Two NHS Security Upgrades	\$67,000	Grant possible, in process
Nock-Molin and NHS Building Automation Systems	\$160,000	
NHS Engineering Planning	\$50,000	
NHS Library Carpet	\$31,875	
Nock-Molin Playground Repaving	\$75,000	
Nock-Molin Kitchen Equipment	\$30,000	
NHS Energy Reduction Project (Phase 4)	\$100,000	Utilities Incentive of 45K
NHS Integrated Arts Space Renovation	TBD	Newburyport Education Foundation, grants
NHS College and Career Center Renovation	TBD	Newburyport Education Foundation, grants
Nock-Molin Sidewalks	\$18,000	
NHS Auditorium Plaster Repairs (after NHS roof)	100,000	

NHS Science Wing Renovation and Addition Update

Current proposal was not accepted by Massachusetts School Building Authority (MSBA)

- ▶ Two-story addition over the gym and renovation of existing science labs totaling approximately 26,000 square feet
- ▶ Construction costs nearing \$700/ square foot
- ▶ \$18.2 million construction costs
- ▶ Designer and Project Manager additional 18% or \$3.25 million

Resubmission of Statement of Intent (SOI) Due April 14, 2023



Estimating Project Costs

